

The farm mapping module is available on the black left-hand menu with Google Maps supplying the map. Please note that the map is not live, it is a couple of years old and there may be differences between the map and what is physically on the ground.

Select 'farm mapping' from the left-hand menu and the map of Ireland is displayed.

To find a farm, enter the **eircode** or **address** of the farm and select 'search'. Alternatively zoom in using the '+' function at the bottom right hand corner of the screen.

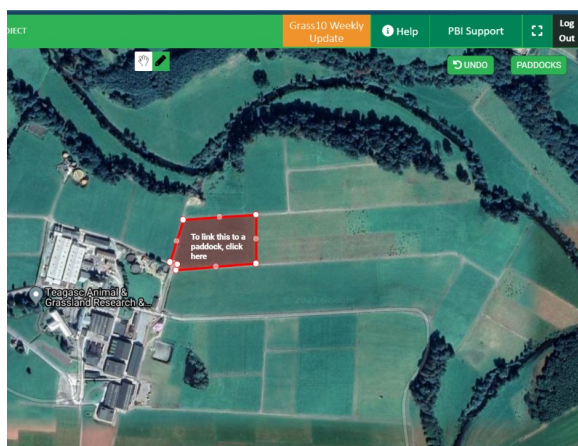


To start drawing/mapping a paddock, select the 'pencil' icon located at the top – centre of the screen. See above. The pencil icon will be green in colour when selected. The map is now in the edit mode.

Start by clicking once in the corner of the paddock (point A). Then select another point along the boundary of the paddock. A line is drawn from one point to another. Continue selecting points along the boundary of the paddock until you arrive back where you started, point A.

When the paddock is completed, the paddock/shape will be displayed in a red colour – see below

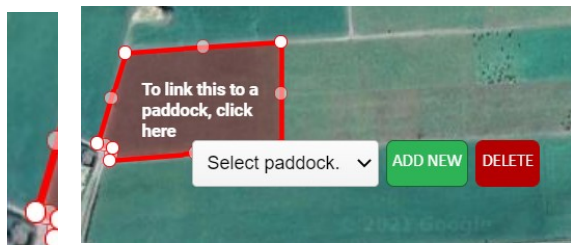
After mapping a paddock it is good practice to select 'save map' on the top left hand corner



## For existing users

You will need to link this mapped paddock with an existing paddock on PastureBase Ireland.

Select anywhere in this paddock (red area) and there is an option to select a paddock from the list. When a paddock is selected from the list, the paddock code, paddock name, area will be shown.



## For new users

Select 'add new'. Then fill in the paddock code and paddock name and select save. The area of the paddock is also displayed. See below.

## To delete a paddock

Select the paddock you want to delete and select the red 'delete' button



## Making adjustments to the boundary/shape of the paddock

If you have made a mistake in mapping the boundary of a paddock, for example if you did not keep close enough to a roadway or ditch this can be easily fixed without deleting the entire paddock. Click on the 'select' icon at the top – centre of the screen [little hand icon]. Note that the icon will change to a green colour. Along the boundary of the paddock there are white and grey points. These points can be dragged in different directions if needs be and the area of the paddock will adjust also. See below the paddock boundary has been altered by dragging the points inwards.



## Tips when mapping a paddock

Use a laptop or computer – avoid small smart device

Zoom in so you can clearly see the boundary of the paddock

Once the paddock is drawn link to existing paddock or add a new paddock before drawing next paddock

Use the white and grey points along the perimeter of the paddock to adjust the shape

Save your map every time you complete a paddock



## Undo Button

As you map a paddock and you feel you have made a mistake and want to start again you can select the 'undo' button which will remove the unfinished polygon.



## Paddock button

When the paddock button is selected, the list of paddocks that are currently saved on your profile are displayed along with the area of each paddock

Below you will see that paddock 1 and paddock 2 are mapped and are saved, they appear in a green colour. The remainder of the paddocks are white in colour as they are not mapped yet.



When all paddocks are mapped, select 'view map' at the top of the screen. See below.



Note that the paddocks have are now green in colour – this is the **view mode**. Paddocks cannot be altered on this screen. On this screen results can be displayed on each paddock. See the top left hand corner there are an array of different options. If you select one of these options, the latest results will be displayed on the map.



See below the 'Grass' option is selected. The following abbreviations are used;

CV – current cover per hectare

Growth – growth rate per hectare

AT – annual tonnage

DLG – days last grazed

NG – number of grazings



NSC – number of silage cuts

Please number that there is also different shading used – see below dark green is used for paddocks with higher grass covers.



## Check Areas option

You must be in 'View Map' mode to use the 'Check Areas' feature.

For existing users all paddocks and all paddocks areas were entered in the 'paddocks' option. When you map a paddock the 'mapped area' is calculated. See below paddock '1 – Below Road' has an area of 1.24 hectares already on PBI but a mapped area of 1.31 hectares. Here you can choose to use the new area if you wish by ticking the 'use mapped area' option. You can move between 'View Map' and 'Edit Map' mode as you wish.

